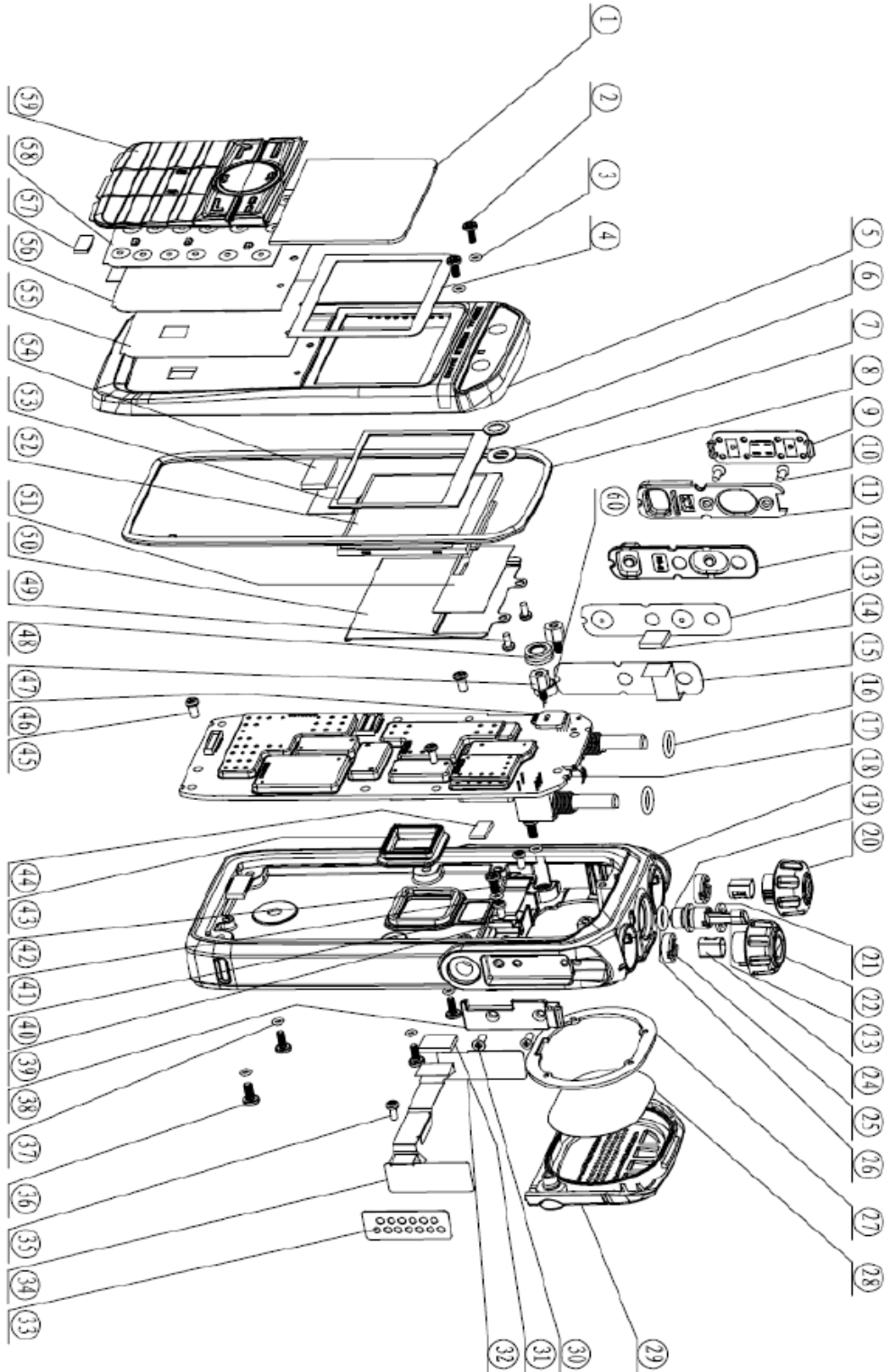
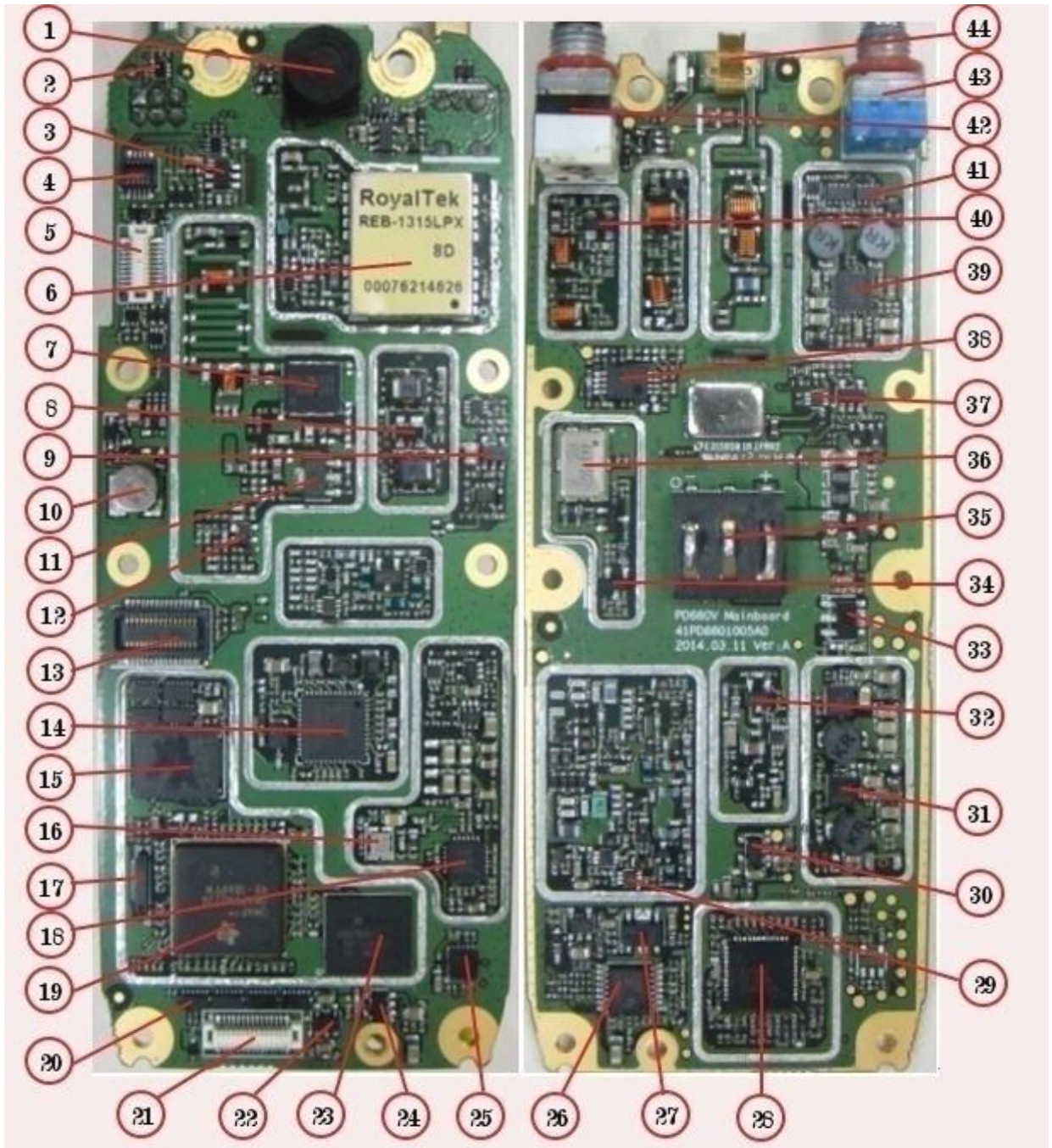


Explosión PD686.





No.	Modelo	Description	Número de parte
1	PD686	PD680 Lens stalinite T=0.80mm 01 (RoHS)	6002199000000
2	PD686	Machine Screw M2*4.8mm pulm bolssom T8 pan and round head, stainless steel 00 (RoHS)	7102004000200
3	PD686	Waterproof ring for 2.0 screw, ID1.75x0.8mm, blue, 40°high tensile silicone rubber 00(RoHS)	6100527100000
4	PD686	PD680 LCD Double-sided adhesive DIC WSR300BK t=0.3mm 00 (RoHS)	7500800000000
5	PD686	Repair kit for PD680 front case (RoHS)	152PD68000800
6	PD686	PD700 Waterproof MIC net Φ7.4mm single-sided adhesive tape 00(RoHS)	7400530000000
7	PD686	PD-780 Mic Pad 0.5mm-thick black PC OD7.8*ID4.0*T0.5mm single-sided adhesive tape 00(RoHS)	7400329000000
8	PD686	PD680 O-ring silica gel (RoHS)	6101044000000
9	PD686	PD600 PTT key cover black+orange PC(EXL9330) 00 (RoHS)	6002028000000
10	PD686	Machine screw M2.0*4mm cross recessed SUS304 00 (RoHS)	7102004000800
11	PD686	PD600 PTT bracket black PC(EXL9330) 00 (RoHS)	6002027000000
12	PD686	PD600 Silicone rubber PTT key 60A black 00 (RoHS)	6100968000000
13	PD686	PD600 Metal dome for PTT key SUS301 200gf 2-key 00 (RoHS)	7300118000000
14	PD686	PD680 10pin PORON 6.6*6.6*t=1.8mm 00 (RoHS)	7500795000000
15	PD686	PD680/PD660 PTT semi-finished FPC chip (RoHS)(REACH)	1300PD6800050
16	PD686	TC-610 Encoder switch O-ring ID 5.0*1.5 red 70A high-tensile silicone rubber 00 (RoHS)	6100334000000
17	PD686	PD680 G Um Radio unit without aluminum chassis(400-527MHz) 1/4W AMBE++ (RoHS)(REACH)	1200PD6800430
18	PD686	Repair kit for PD680 Aluminume kit with vibrato 00 (RoHS) 01 (RoHS)	152PD68000600
19	PD686	SMA RF connector SMA6351A2-001-SXPT10G-50 50ohm 0~4GHz SMA IPX7 L=10.34mm (RoHS)	4400200003000
20	PD686	PD600 program knob kit	150PD60000300
21	PD686	X1e antenna pad, black, 40-degree silicone rubber, 00 (RoHS)(REACH)	6100730000000
22	PD686	PD600 volume control Knob kit	150PD60000200
23	PD686	PD680 Light pipe PMMA 00 (RoHS)	6002197000000
24	PD686	Lining for TC2088 knob T0.25mm SUS304 00 (RoHS)	6202825000000
25	PD686	PD600 Nut for volume switch Φ9*M6*2.5 P0.75 stainless steel SUS304 00 (RoHS)	7206002500400
26	PD686	TC-980 Volume switch O-RING ID5.0*1.2 00 (RoHS)	6100370000000
27	PD686	PD680 backcase_oring rubber 40° black 00 (RoHS)	6101045000000
28	PD686	PD680 Trumpet anti-dust mesh (RoHS)	7400675000000
29	PD686	PD680 At the back f the cove PC(EXL9330) 01 (RoHS)	6002196000010
30	PD686	Self-tapping screw ST1.9*4.0, cross recessed, carbon steel, nickel plated 01 (RoHS)	7101904020310
31	PD686	PD680 20pin PORON 9*6.8*t=0.8mm 00 (RoHS)	7500796000000
32	PD686	PD600 Double-sided adhesive tape for accessory connector L24*W9.4*T0.30mm DIC WS300B	7500721000000
33	PD686	PD600 PC sheet for earpiece black single-sided adhesive tape 00(RoHS)	7400609000000
34	PD686	PD680/PD660 13PIN semi-finished FPC chip (RoHS)(REACH)	1300PD6800110
35	PD686	Self-tapping screw (V2) ST1.9*4.0mm carbon steel cross recessed pan and round head nickel	7101904020200
36	PD686	Machine Screw M2*4.8mm pulm bolssom T8 pan and round head, stainless steel 00 (RoHS)	7102004000200
37	PD686	Waterproof ring for 2.0 screw, ID1.75x0.8mm, blue, 40°high tensile silicone rubber 00(RoHS)	6100527100000
38	PD686	PD680 The lid of the headphone jack ADC12 00 (RoHS)	6300256000000
39	PD686	PD680 The motor of baffle SUS301 T=0.5mm 00 (RoHS)	6203584000000
40	PD686	Self-tapping screw (V2) ST1.9*4.0mm carbon steel cross recessed pan and round head nickel	7101904020200
41	PD686	Waterproof ring for 2.0 screw, ID1.75x0.8mm, blue, 40°high tensile silicone rubber 00(RoHS)	6100527100000
42	PD686	MACHINE-MADE SCREW M2.0*5.0 CROSSED-SLOT CROP(DIA4.5) CARBON STEEL PLATING-Zn N	7102005000600
43	PD686	PD600 waterproof ring for battery connector, orange, 40 Shore A, silicone rubber 00 (RoHS)	6101037000000
44	PD686	PD600 POWER- AMPLIFICATION COOLING- PAD BMC STG4015 9.8*6.0*T=1.0 00 (RoHS)	7500715000000
45	PD686	Self-tapping screw (V2) ST1.9*4.0mm carbon steel cross recessed pan and round head nickel	7101904020200
46	PD686	PD780 MIC PAD Black rubber 80 Degree 8*7.8*1.0mm Single-sided adhesive(RoHS)	7500356000000
47	PD686	Hexagonal nut stainless steel column M2*4.5 (RoHS)	7102004500000
48	PD686	TC3000 Silicone microphone cover black Silicone Hardness: 30°01 (RoHS)	6100111000010



49	PD686	Self-tapping screw (V2) ST1.9*4.0mm carbon steel cross recessed pan and round head nickle	7101904020200
50	PD686	PD680 LCD Support of the shelf SUS304 T=0.3mm 00 (RoHS)	6203585000000
51	PD686	PD680 LCD Support of the shelfPORON T=0.2mm 00 (RoHS)	7500794000000
52	PD686	TFT LCD CCPASZ0685 3.3V 160*128 -30~+75°C 1.77" TRULY (RoHS) (REACH)	5130000000150
53	PD686	PD680 LCD Poron(PSR) 00 (RoHS)	7500793000000
54	PD686	PD680 LCD FPC poron 14.0*6.7*t=1.5mm 00 (RoHS)	7500797000000
55	PD686	PD680 Double faced adhesive tape 3M9448 t=0.1mm 00 (RoHS)	7500798000000
57	PD686	PD680 Keypad FPC PORON 12.3*6.7*t=0.8mm 00 (RoHS)	7500799000000
58	PD686	PD680 The function of the metal bond 00 (RoHS)	7300128000000
59	PD686	PD680 P+R keypad PC 00 (RoHS)	6101046000000
	PD686	PD680 G Um Radio unit without aluminum chassis(400-527MHz) 1/4W SELP (RoHS)(REACH)	1200PD6800460
	PD686	PD680 G VHF Radio unit without aluminum chassis(136MHz-174MHz) 1/5W AMBE++ (RoHS)(REACH)	1200PD6800500
	PD686	PD680 G VHF Radio unit without aluminum chassis(136MHz-174MHz) 1/5W SELP (RoHS)(REACH)	1200PD6800540
	PD686	PD680 GMD Um Radio unit without aluminum chassis(400-527MHz) 1/4W AMBE++ (RoHS)(REACH)	1200PD6800250
	PD686	PD680 GMD Um Radio unit without aluminum chassis(400-527MHz) 1/4W SELP(RoHS)(REACH)	1200PD6800480
	PD686	PD680 GMD VHF Radio unit without aluminum chassis(136MHz-174MHz) 1/5W AMBE++ (RoHS)(REACH)	1200PD6800520
	PD686	PD680 GMD VHF Radio unit without aluminum chassis(136MHz-174MHz) 1/5W SELP (RoHS)(REACH)	1200PD6800560
	PD686	PD680 MD VHF Radio unit without aluminum chassis(136MHz-174MHz) 1/5W AMBE++ (RoHS)(REACH)	1200PD6800510
	PD686	PD680 MD VHF Radio unit without aluminum chassis(136MHz-174MHz) 1/5W SELP(RoHS)(REACH)	1200PD6800550
	PD686	PD680 MD Um Radio unit without aluminum chassis(400-527MHz) 1/4W AMBE++ (RoHS)(REACH)	1200PD6800440
	PD686	PD680 MD Um Radio unit without aluminum chassis(400-527MHz) 1/4W SELP (RoHS)(REACH)	1200PD6800470
	PD686	PD680 Um Radio unit without aluminum chassis(400-527MHz) 1/4W AMBE++ (RoHS)(REACH)	1200PD6800420
	PD686	PD680 Um Radio unit without aluminum chassis(400-527MHz) 1/4W SELP (RoHS)(REACH)	1200PD6800450
	PD686	PD680 VHF Radio unit without aluminum chassis(136MHz-174MHz) 1/5W AMBE++ (RoHS)(REACH)	1200PD6800490
	PD686	PD680 VHF Radio unit without aluminum chassis(136MHz-174MHz) 1/5W SELP (RoHS)(REACH)	1200PD6800530
	PD686	Repair kit for PD680 rear case 00 (RoHS)	152PD68000500
	PD686	Repair kit for PD680 Alumine kit without vibrate 00 (RoHS) 00 (RoHS)	152PD68000700

Números de parte sujetos a cambio sin previo aviso