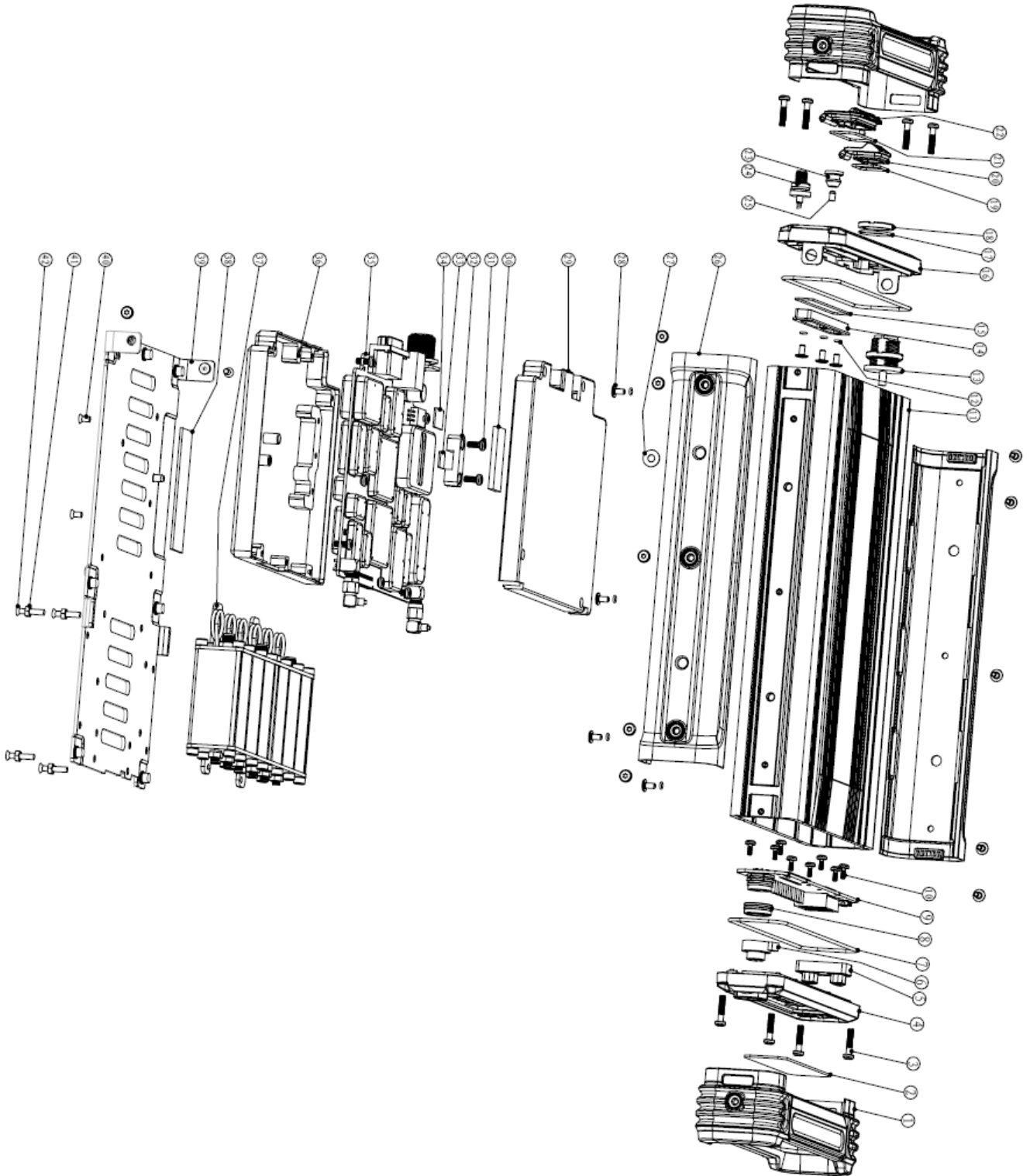
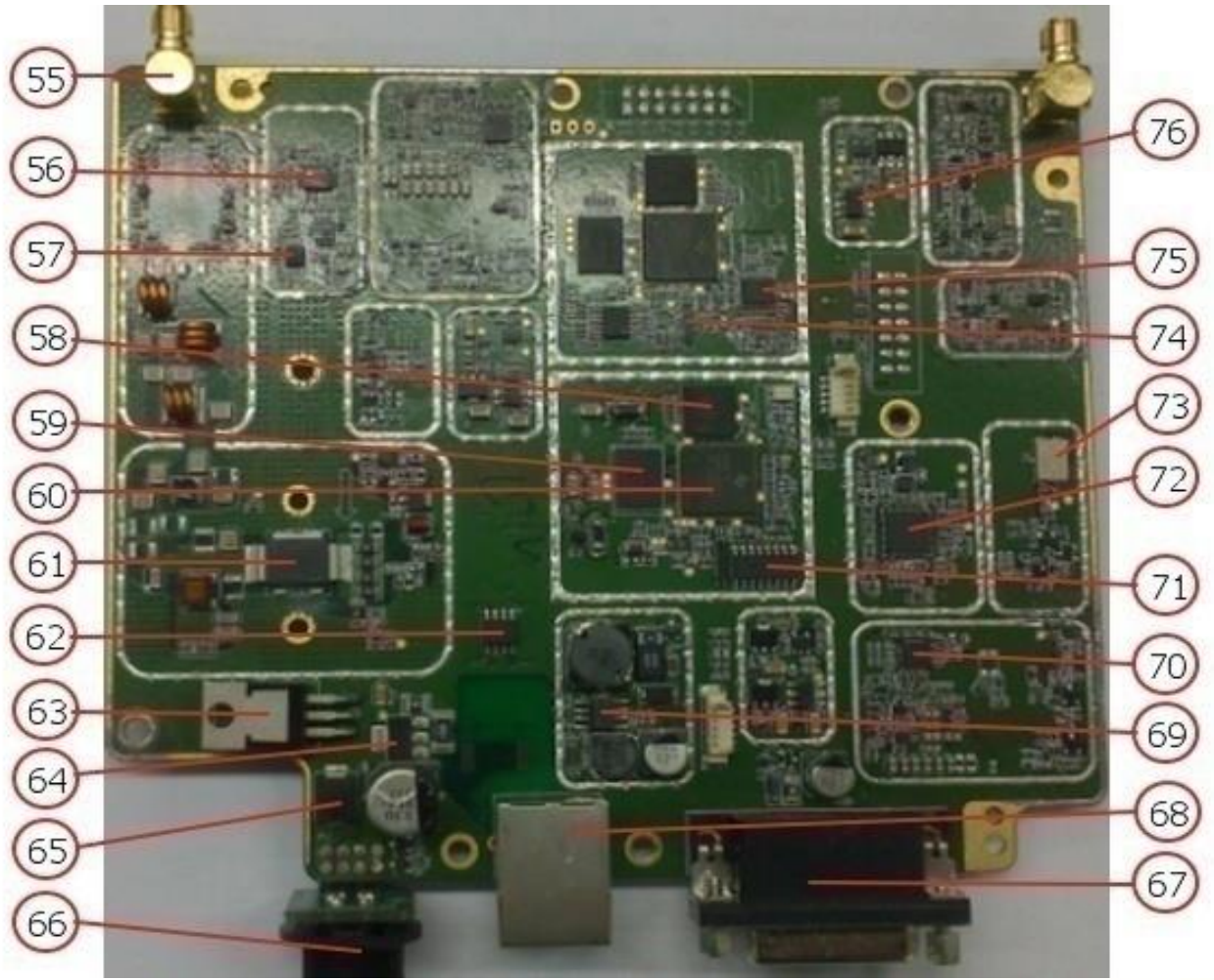
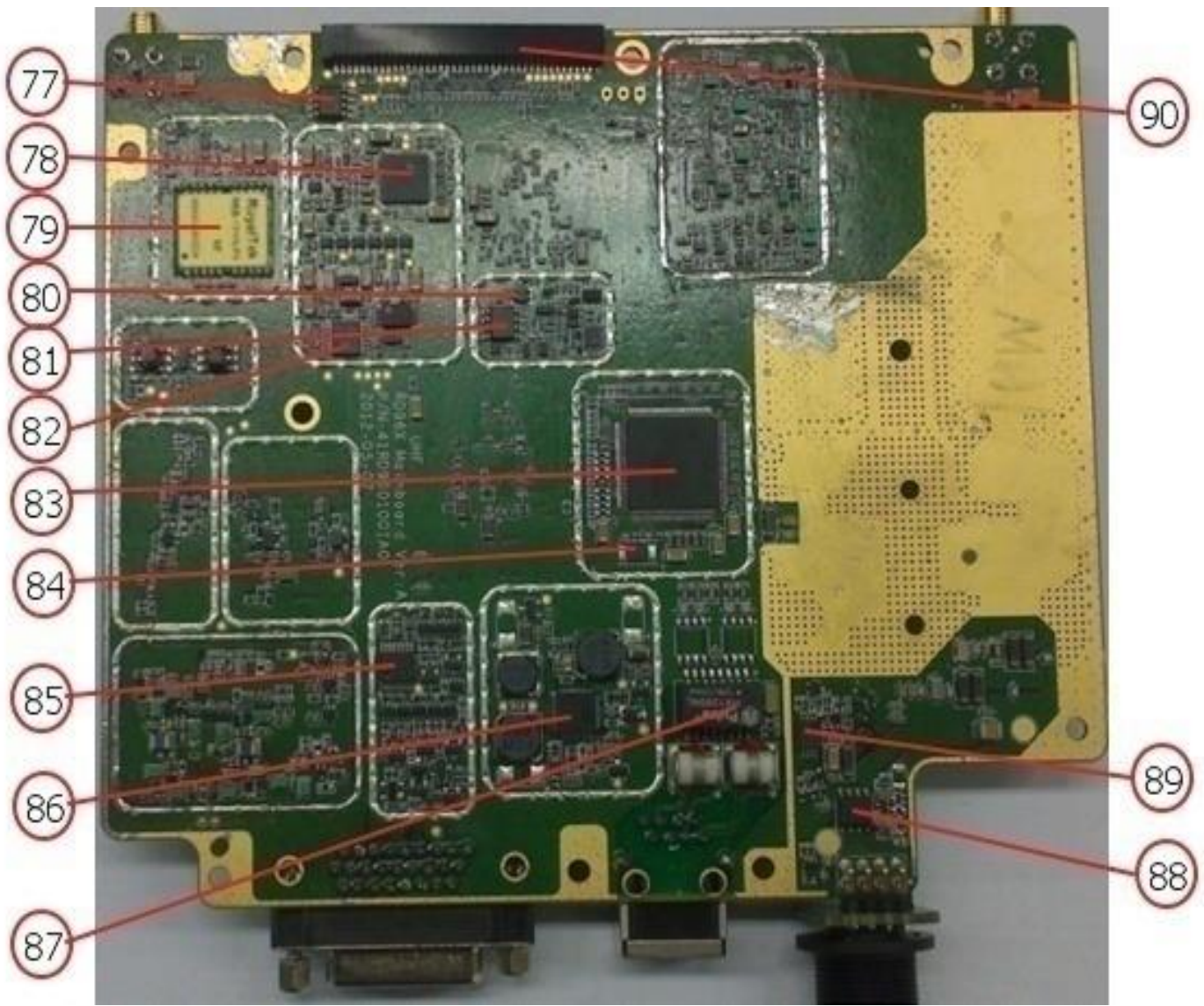




Explosión RD966.







No.	Modelo	Description	Número de parte.
1	RD966	Protective case for RD960 (top) PC (EXL1414) black 00 (RoSH)(REACH)	6001846000000
2	RD966	Lens of RD960 front case PMMA t=1.2mm silk print single-sided adhesive tape 00 (Ro	6001608000000
3	RD966	Machine screw, M3.0*15.0mm, T10 torx recessed, pan head,with rebound pad,stainles	7103001500000
4	RD966	RD960 front panel ADC12 polished+sand plated+anodic oxidation black 00(RoHS)(RE	6300194000000
5	RD966	Channel selection key of RD960 front panel 60 degrees silicone rubber grey silk print	6100830100000
6	RD966	Power key of RD960 front panel 60 degrees silicone rubber black silk print red 00 (RoH	6100829100000
7	RD966	O_RING ID114.02*1.78mm black40 degrees silicone rubber 00 (RoHS)	6100827000000
8	RD966	MT680 Waterproof Ring for Palm Mic Jack, orange, 40 degrees, high tensile strength s	6100408001000
10	RD966	MACHINE SCREW M2.0X6 TORX T8 PAN STAINLESS ELECTROPHORESIS BLACK 00	7102004000400
11	RD966	Housing of RD960 repeater AL6063 sandblasting anode oxidized silver silk print 00 (R	6203355000000
12	RD966	O_RING ID2.31*1.0mm orange70-degree high tensile silicone rubber 00 (RoHS)	6100574100000
13	RD966	RF cable 180°SMAM-to-90°AMC/F 50Ω 0~4GMHz baby blue -40~105℃ 130mm Amp	4220130000600
14	RD966	Waterproof cover of RD960 rear panel ADC12 polished+sand plated+anodic oxidation	6300190000000
15	RD966	O_RING ID50*1.0mm blue 40-degree silicone rubber 00 (RoHS)	6100700000000
16	RD966	RD960 rear panel ADC12 polished+sand plated+anodic oxidation black 00(RoHS)(RE	6300195000000
17	RD966	O-RING ID17.0*Φ1.2 blue 45-degree silicone rubber 00 (RoHS)	6100813000000
18	RD966	Nut of connector for RD960 power 5/8"-27UNS Φ18.5X3mm brass H62 nickel-plated C	7201601500010
19	RD966	O_RING ID19*1.3mm orange 60-degree high tensile silicone rubber 00 (RoHS)	6100821000000
20	RD966	RD960 RJ45 waterproof cover PC(EXL1414) black 01 (RoHS)	6001849000000
21	RD966	O_RING ID30*1.3mm orange 60-degree high tensile silicone rubber 00 (RoHS)	6100822000000
22	RD966	RD960 DB26 waterproof cover PC(EXL1414) black 01 (RoHS)	6001848000000
23	RD966	MD780 GPS soft plastic stopple black 60 silicone rubber 00 (RoHS)	6100494000000
24	RD966	RF cable 180°SMAM-to-90°AMC/F 50Ω 0~4GMHz black -40~105℃ 130mm Amphenol	4220130000600
25	RD966	TC-610 Earpiece cover stopper White POM φ3.2*5.0mm 00(RoHS)	6000700000000
26	RD966	Protective case for RD960 (side) PC (EXL1414) black 00 (RoSH)(REACH)	6001847000000
27	RD966	Waterproof breathable film for PT580H radio OD9.8*ID4.2mm IP68 00 (RoHS)(REACH	7400408000000
28	RD966	Machine screw M3.0*8.0mm cross recessed, round head SUS304 1/4H 00 (RoHS)	7103008002100
29	RD966	Upper cover for RD960 shielding box AL6061 silk print 00 (RoHS)(REACH)	6202774000000
30	RD966	Conductive sponge for RD960 PA shielding mask t=3mm 36*15mm single-sided adhe	7500549000000
31	RD966	Machine screw M3.0*8.0mm, T10 torx recessed, half-round head, with rebound pad, st	7103008000400
32	RD966	RD960 Power amplifier block ADC12 00 (RoHS)(REACH)	6300189000000
33	RD966	Silicone rubber pad for RD960 PA 9*9*T1.0mm with adhesive applied to single side 00	7500594000000
34	RD966	TM-600 Heat dissipation silica gel 16*11mm t=1.0mm 00 (RoHS)	7500159000100
9	RD966	RD960 semi-finished control panel, post soldering (RoHS)(REACH)	150RD96000100
35	RD966	RD960 U(1)(400-470MHz) C Semi-finished main board AMBE++ (RoHS)(REACH)	150RD96000500
	RD966	RD960 U(1)(400-470MHz) C Semi-finished main board SELP(RoHS)	150RD96000600
	RD966	RD960 U(3)(350-400MHz) Semi-finished main board AMBE++ (RoHS)(REACH)	150RD96000300
	RD966	RD960 U(3)(350-400MHz)Semi-finished main board SELP (RoHS)(REACH)	150RD96000400
	RD966	RD960 VHF (136-174MHz)Semi-finished main board SELP (RoHS)(REACH)	150RD96000200
	RD966	RD960 VHF(136-174MHz) Semi-finished main board (RoHS)(REACH)	150RD96000000
36	RD966	RD960 bottom cover of shielding box, AL6061 00(RoHS)(REACH)	6202775000000
38	RD966	RD960 core fixing board heat sink pad 1.0mm GAP PAD1500 70.0*20.0mm 00 (RoHS)	7500595000000
39	RD966	Fixing board for RD960 chassis AL5052 T2.0mm 01 (RoHS)(REACH)	6202773000010
40	RD966	【HMF】 DIB500 countersunk screw M3X6.0mm T10 SUS304 (1148.2781.00)(RoHS)	7103006001100

41	RD966	nut M3.0*2.4mm hexagonal White zinc plated00 (RoHS)	7203002400000
42	RD966	Machine screw M3*10mm torx recessed(T10) Pan head SUS304 passivated drop-resi	7103001000000
PC BOARD			
Serials No.	Modelo.	Description	Material No.
44	RD966	light-emitting diode LT5CB4-81-UAC3-EC8 150mcd 30mA 3.2V -25~85 °C ϕ 5.0mm LE	3307990000080
45	RD966	Aviation plug (male) C SP-09-01-M001 10Pin IP67 Φ 14.60*12.0mm with new pin ampf	5208010100010
46	RD966	LED LT5C34-81-UGC7 Yellow 400mcd 30mA 2.1V -20~85 °C ϕ 5.0mm (RoHS) (REACH	3307990001530
47	RD966	Power Management IC XC6209F332PR LDO 12V 3.3V 300mA -40 °C ~85 °C SOT89-5 T	3608015000210
48	RD966	Logic IC SN74AHC594PWR serial-to-parallel converter 2-5.5V -40~-85 °C TSSOP16 TI (3607010000400
49	RD966	ESD Protection Diode MMBZ5V6ALT1G 3V 3A -55 °C ~+150 °C SOT-23 ONSEMI (RoHS)	3310240200000
50	RD966	USB protection IC PRTR5V0U2X ESD&EMI 5V -40~85 °C SOT143B NXP (RoHS)	3699037000010
51	RD966	ESD protection diode MMBZ6V8ALT1G 4.5V 24W1ms 150 °C SOT-23 ON (RoHS)	3310990000090
52	RD966	light-emitting diode LT5C24-81-URC9 Super bright green 400mcd 30mA 3.2V -25~85 °	3307990000070
53	RD966	Digitron ELD-511SYGWA/S530-E2_1440 2V rated current:25mA 25*19*4.5 EVERLIGH	5499000001000
54	RD966	LED LT5C14-81-UA91 Super Bright Red 250mcd 30mA 1.9V -20~85 °C ϕ 5.0mm LEDT	3307990000060
55	RD966	IPX RF connector, U.FL-R-SMT(01) 50Q DC ~3GHZ -40~90 °C, female, SMD HRS (Ro	4411100002000
56	RD966	Operational amplifier NJM2904V 3~32V 300mW 100dB -40~+85 °C SSOP8 JRC (RoHS)	3605008005070
57	RD966	Operational amplifier TA75W01FU(TE12L.F) 6~12V 250mW 100dB -40~+85 °C SSOP8	3605002054590
58	RD966	Memory MT48H8M16LFB4-75 IT Mobile-SDRAM 128Mb 1.70~1.95V -40~+85 °C VFBGA	3612044000010
60	RD966	[MSL4]MCU OMAP5912ZZG 32 bit 1.6V 192MHz -40~+85 °C BGA-289 TI (RoHS)	3610010000010
61	RD966	Operational Amplifier AD8566ARMZ 0.256mW 5~16V 40dB -40~85 °C MSOP-8 ADI (Ro	3605025000020
62	RD966	TVS Diode Array SLVU2.8-4.TBT 2.8V 24A/8/20us -55~+125 °C SO-8 SEMTECH (RoHS)	3310350000020
63	RD966	PNP Transistor D45H8G 60V 10A 60 150 °C TO-220 ONSEMI (RoHS)	3414999000020
64	RD966	NPN transistor PZT2222A 40V 600mA 75 -65 °C ~+150 °C SOT223 NXP (RoHS) (REAC	3404999000020
65	RD966	TVS diode 3.0SMCJ20A 20V 84.5A 175 °C SMC DIODES (RoHS) (REACH)	3399100000010
66	RD966	Plug HYTBD-06BFFA-SC 6pin(F conn F pin) -40 °C ~105 °C IP67 ϕ 20mm*43mm B-Size	5205006000060
67	RD966	Socket 5510-26S-02A-01 26PIN -40 °C ~85 °C 39.1*12.6*22.1 D_SUB 3-array, female N	5205026000030
69	RD966	Power management IC TPS5431DDA IC 5-23V 1.22-22V 3A -40-125 °C SO-8 TI (RoHS)	3608010000080
70	RD966	[MSL3]Synthesizer IC SKY72310-362LF 2.1 GHz 3V -40~+85 °C QFN-24 SKYWORKS (3604019000000
71	RD966	IC MAX3232ESE+T 3.0-5.5V 1Mbps -40~+85 °C SO-16 MAXIM (RoHS)	3608012000000
72	RD966	[MSL3]IF Processor IC AD9864 10-300MHZ -40~+85 °C ADI (RoHS)	3603999000000
73	RD966	Crystal filter DSF753SDF 44.85MHz \pm 6.5kHz 4dB -30 °C ~+70 °C 7*5 KDS (RoHS) (REAC	3802448540040
74	RD966	Crystal SSP-T7F 32.768KHZ \pm 20ppm 12.5pF -40 °C ~+85 °C SMD SEIKO (RoHS)	3701327610060
75	RD966	D/A IC TLV5614IPWRG4 12-BIT 20MHZ 2.7~5.5V -40~ 85 °C TSSOP-16 TI (RoHS)	3606010000010
76	RD966	Power management IC XC6209F502PR LDO 5V 300mA -40~+85 °C SOT-89-5 TOREX	3608015000060
77	RD966	Current limit switch TPS2061D 1A 2.7~5.5 -40 °C to 85 °C SOIC TI (RoHS) (REACH)	3609010000310
78	RD966	[MSL2]Base Band Processor IC TLV320AIC29IRGZR CODEC 3.3V -40~85 °C QFN-48 T	3613010000000
79	RD966	GPS module REB-1315LPX-2S1(U3ZERAK30AP) 3.3V \pm 5%/33mA 1575.42MHz -159dB	3625999000030
80	RD966	Schottky diode MBRM120LT1G 20V 1A 0.45V -55~125 °C Powermite ONSEMI (RoHS)	3311240100000
81	RD966	Reset IC TPS3705-33DR 3.3V 2.93V -40~85 °C SOIC8 Watchdog TI (RoHS)	3609010000210
82	RD966	Operational amplifier LM2902 4-operation TI(RoHS)	3605010000020
83	RD966	Port Managed Ethernet Switch LAN9311i-NZW 3.3V -40~85 °C XVTQFP-128 SMSC (Ro	3609999007670
84	RD966	Crystal DSX321G-25.000 25MHz \pm 10ppm 8PF -40~+85 °C 3.2*2.5mm SMD KDS (RoHS)	3701002560000



85	RD966	Logic IC 74AHCT594PW serial-to-parallel converter 2~5.5V -40~125 °C TSSOP16 NXP	3607023000150
86	RD966	Power management IC TPS65021 charging IC 3.0V 1200mA -40~+85 °C QFN-40 TI(RoHS)	3608010000020
87	RD966	Transformer HX1260 POE Standard 1:1 SOIC-16 pulse (RoHS)	5406000000120
88	RD966	P-MOSFET TPC8117 -30V -18A +/-20V 150 °C 2-6J1B(SOP-8) TOSHIBA (RoHS)	3599990000470
89	RD966	Operational amplifier NJM2904V 3~32V 300mW 100dB -40~+85 °C SSOP8 JRC (RoHS)	36050080005070
90	RD966	FFC Connector 40FMN-SMT-A-TF 40Pin 1.0mm 50VDC 0.5A 43.0*5.8*3.0mm SMD JS	5206040200010

Números de parte sujetos a cambio sin previo aviso