

# **Filtering Printer Commands using POSTRACE**

# I. Purpose

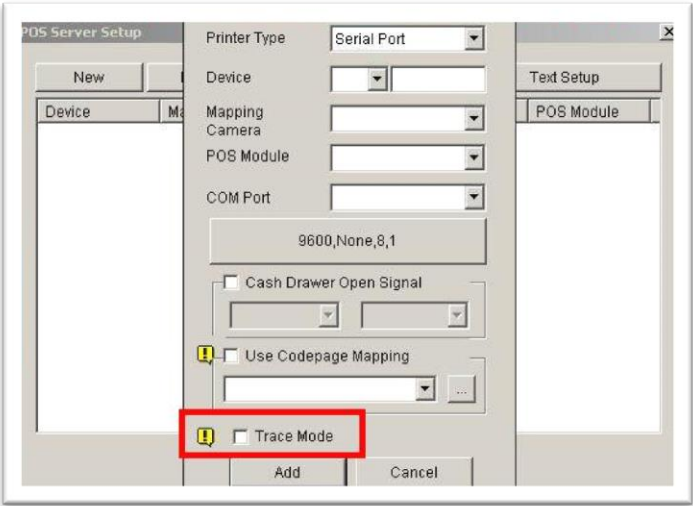
The purpose of **POSTRACE** is a tool which can clone the **POS** data. It is used to identify why the transaction is not displaying the way it should. From this Data, a customize file can be created to Filter out and replace certain command in the feed.

**Example:**

Customer has this situation. (for more information, you can see the attachment)



1. To enable **POS** trace, Tick the **Trace mode** and scan items as normal.



2. Please find the **BIN2** file from **C://Windows / POSTRACE / POSTRACE [date,xxxxxxx].BIN2**

# II. Usage

- Once customer enables Tracemode in the POS Application Settings, here are the simple modifiers in order to ensure certain commands are properly filtered. Open up the POS\*\*\*.bin2 file and you will notice a pattern:

```

11 asdf
12 ENONULNULNULasd
13 fACKNULNULNUL
14 asdf
15 ENONULNULNULsad
16 fENONULNULNUL
17 sdf
18 ENONULNULNULasd
19 fETXNULNULNUL
20 sdENONULNULNULf
21 dsf
  
```

Single Line Commands that are already properly filtered in the Printer commands always have the **printer command followed by 3 x NUL TAGS**.

Ex.

Indication in POS trace	Appropriate Reference to the Command in the Printer Command
<pre> 1 asdf 2 ENONULNULNULasd 3 fACKNULNULNUL 4 asdf 5 ENONULNULNULsad 6 fENONULNULNUL 7 sdf 8 ENONULNULNULasd 9 fETXNULNULNUL 0 sdENONULNULNULf 1 dsf           </pre>	<p>5=1,ENQ,1,1</p> <p>Command Reference</p> <p>5 = Index Value            1 = One Command Statement            ENQ = Command Itself            1 = Feature mode is 1            1 = Cut Length is 1</p>

After adding the appropriate single command, make sure to Increment the Single-command number to the appropriate amount.

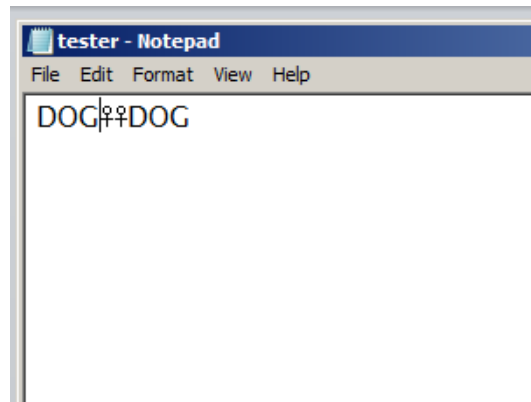
**Example: Replace Text with New Text**

12=1,FF,1,1,0,TRAN\_STOP

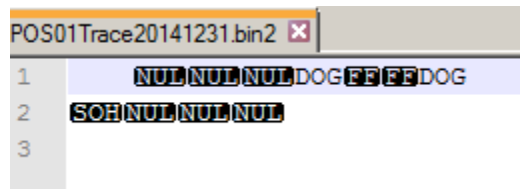
- 12 = Index Value
- 1 = One Command Statement
- FF = Command Itself
- 1 = Feature Mode is 1
- 0 = Words you want to replace
- TRAN\_STOP = Statement you want to show up in the Log

**Example: Replace the Female Sign and Filter it**

**Text**



**POS Trace**



The text to be filtered in this case is Female Sign = FF

In this case, it is already covered by the following rule as seen in the general printer command file:

12=1,FF,1,1,0,TRAN\_STOP

Action: Filter the Text and initiate a Transaction stop

Example: Filtering out the ESC Variable

```
!NUL NUL ESC SOH NUL NUL NUL  
!NUL NUL ESC SOH NUL NUL NUL ESC!  
!NUL NUL ESC SOH NUL NUL NUL
```

1=1,SOH,1,1